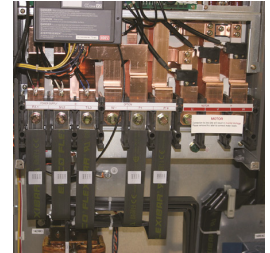
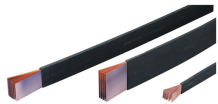
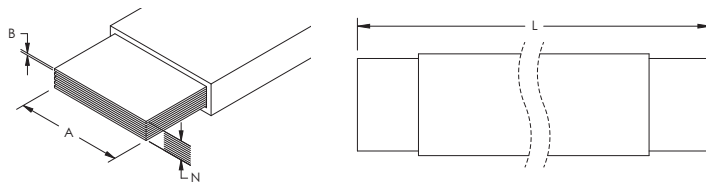


nVent ERIFLEX Flexibar, Red Copper



- Thin layers of bare electrolytic copper formed into a stack
- Full range from 19.5 mm² up to 1200 mm² and 125 A to 2800 A
- Insulated by high-resistance, self-extinguishing PVC with less than 20% contact with conductor for high flexibility
- Easily bent, folded, and twisted, improving assembly flexibility, shortening connections, and decreasing footprint
- Dramatically smaller and more flexible than comparable cable based on ampacity
- Better power density than cable with lower skin effect ratio
- Connections made by punching and bolting directly through the copper laminates, clamping onto the end of the nVent ERIFLEX Flexibar, or welding using nVent ERICO Cadweld
- No lugs needed, reducing installation time and improving resistance to vibration
- Weight savings and material savings compared to wire alternatives
- Reduces total installation cost
- Traceability codes and designation part numbers printed on insulation
- 100% production dielectric tested
- UL 758 Appliance Wiring Material requirements for Cold Bend testing at -40°C and -50°C (-40°F and -58°F)
- EAC compliant
- RoHS compliant



Material: Copper, Polyvinylchloride
 Dielectric Strength: 20 kV/mm
 Flammability Rating: UL[®] 94V-0
 Insulation Elongation: 370 %
 Insulation Thickness: 2 mm
 Nominal Voltage, UL/CSA/IEC: 1 000 VAC, 1 500 VDC
 Working Temperature: -50 to 105 °C
 Forming Temperature: 0 – 55 °C
 Complies With: IEC[®] 60439.1, IEC[®] 61439.1, IEC[®] 61439.1 Class II, IEC[®] 60695-2-11 (Glow Wire Test 960 °C)



Part Number	Article Number	L (mm)	ΔT 40 K (A)	ΔT 50 K (A)	ΔT 60 K (A)	N	A (mm)	B (mm)	Cross Section (mm ²)	2 Bar Current Coefficient	3 Bar Current Coefficient	Certifications
Typical Application Current Rating: 125 A – Certification Details: UL [®] 67, UL [®] 758												
FLEX2MRC3X9	552410	2 000	120	134	147	3	9,0	0,8	21,6	1,72	2,25	ABS, Bureau Veritas, CE, ERIFLEX ABS, cURus, EAC, RoHS
FLEX2MRC8X6	552400	2 000	143	166	182	8	6,0	0,5	24,0	1,72	2,25	ABS, Bureau Veritas, CE, ERIFLEX FLEXIBAR,

Part Number	Article Number	L (mm)	ΔT 40 K (A)	ΔT 50 K (A)	ΔT 60 K (A)	N	A (mm)	B (mm)	Cross Section (mm²)	2 Bar Current Coefficient	3 Bar Current Coefficient	Certifications
												cURus, EAC, RoHS
FLEX2MRC3X13	552440	2 000	150	167	184	3	13,0	0,5	19,5	1,72	2,25	ABS, Bureau Veritas, CE, ERIFLEX ABS, cURus, EAC, RoHS
FLEX2MRC2X15-5	552390	2 000	191	212	234	2	15,5	0,8	24,8	1,72	2,25	ABS, Bureau Veritas, CE, ERIFLEX ABS, cURus, EAC, RoHS
FLEX2MRC6X9	552420	2 000	220	245	269	6	9,0	0,8	43,2	1,72	2,25	ABS, Bureau Veritas, CE, ERIFLEX FLEXIBAR, cURus, EAC, RoHS
Typical Application Current Rating: 250 A – Certification Details: UL® 67, UL® 758												
FLEX2MRC6X13	552450	2 000	226	253	277	6	13,0	0,5	39,0	1,72	2,25	ABS, Bureau Veritas, CE, ERIFLEX FLEXIBAR, cURus, EAC, RoHS
FLEX2MRC9X9	552430	2 000	237	265	291	9	9,0	0,8	64,8	1,72	2,25	ABS, Bureau Veritas, CE, ERIFLEX FLEXIBAR, cURus, EAC, RoHS
FLEX2MRC2X20X1	552490	2 000	246	275	300	2	20,0	1,0	40,0	1,72	2,25	ABS, Bureau Veritas, CE, ERIFLEX ABS, cURus, EAC, RoHS
FLEX2MRC4X15-5	552460	2 000	286	320	350	4	15,5	0,8	49,6	1,72	2,25	ABS, Bureau Veritas, CE, ERIFLEX ABS, cURus, EAC, RoHS
FLEX2MRC3X20X1	552500	2 000	323	360	395	3	20,0	1,0	60,0	1,72	2,25	ABS, Bureau Veritas, CE, ERIFLEX ABS, cURus, EAC, RoHS
FLEX2MRC2X24X1	552550	2 000	340	380	416	2	24,0	1,0	48,0	1,72	2,25	ABS, Bureau Veritas, CE, ERIFLEX ABS, cURus, EAC, RoHS
FLEX3MRC2X20X1	541090	3 000	246	275	300	2	20,0	1,0	40,0	1,72	2,25	ABS, Bureau Veritas, CE, ERIFLEX FLEXIBAR, cURus, EAC, RoHS
FLEX3MRC4X15-5	541060	3 000	286	320	350	4	15,5	0,8	49,6	1,72	2,25	ABS, Bureau Veritas, CE, ERIFLEX FLEXIBAR, cURus, EAC, RoHS

Part Number	Article Number	L (mm)	ΔT 40 K (A)	ΔT 50 K (A)	ΔT 60 K (A)	N	A (mm)	B (mm)	Cross Section (mm ²)	2 Bar Current Coefficient	3 Bar Current Coefficient	Certifications
FLEX3MRC3X20X1	541100	3 000	323	360	395	3	20,0	1,0	60,0	1,72	2,25	ABS, Bureau Veritas, CE, ERIFLEX FLEXIBAR, cURus, EAC, RoHS
FLEX3MRC2X24X1	541150	3 000	340	380	416	2	24,0	1,0	48,0	1,72	2,25	ABS, Bureau Veritas, CE, ERIFLEX FLEXIBAR, cURus, EAC, RoHS
Typical Application Current Rating: 400 A – Certification Details: UL® 67, UL® 758												
FLEX2MRC4X20X1	552510	2 000	360	402	440	4	20,0	1,0	80,0	1,72	2,25	ABS, Bureau Veritas, CE, ERIFLEX ABS, cURus, EAC, RoHS
FLEX2MRC6X15-5	552470	2 000	360	402	440	6	15,5	0,8	74,4	1,72	2,25	ABS, Bureau Veritas, CE, ERIFLEX FLEXIBAR, cURus, EAC, RoHS
FLEX2MRC2X32X1	552620	2 000	363	406	445	2	32,0	1,0	64,0	1,72	2,25	ABS, Bureau Veritas, CE, ERIFLEX ABS, cURus, EAC, RoHS
FLEX2MRC3X24X1	552560	2 000	370	413	453	3	24,0	1,0	72,0	1,72	2,25	ABS, Bureau Veritas, CE, ERIFLEX ABS, cURus, EAC, RoHS
FLEX2MRC5X20X1	552520	2 000	376	420	460	5	20,0	1,0	100,0	1,72	2,25	ABS, Bureau Veritas, CE, ERIFLEX ABS, cURus, EAC, RoHS
FLEX2MRC2X40X1	552690	2 000	406	455	500	2	40,0	1,0	80,0	1,72	2,25	ABS, Bureau Veritas, CE, ERIFLEX ABS, cURus, EAC, RoHS
FLEX2MRC10X15-5	552480	2 000	407	455	498	10	15,5	0,8	124,0	1,72	2,25	ABS, Bureau Veritas, CE, ERIFLEX ABS, cURus, EAC, RoHS
FLEX2MRC6X20X1	552530	2 000	413	462	506	6	20,0	1,0	120,0	1,72	2,25	ABS, Bureau Veritas, CE, ERIFLEX FLEXIBAR, cURus, EAC, RoHS
FLEX2MRC4X24X1	552570	2 000	416	465	510	4	24,0	1,0	96,0	1,72	2,25	ABS, Bureau Veritas, CE, ERIFLEX ABS, cURus, EAC, RoHS
FLEX2MRC3X32X1	552630	2 000	430	480	525	3	32,0	1,0	96,0	1,72	2,25	ABS, Bureau Veritas, CE, ERIFLEX ABS, cURus,

Part Number	Article Number	L (mm)	ΔT 40 K (A)	ΔT 50 K (A)	ΔT 60 K (A)	N	A (mm)	B (mm)	Cross Section (mm ²)	2 Bar Current Coefficient	3 Bar Current Coefficient	Certifications
												EAC, RoHS
FLEX3MRC4X20X1	541110	3 000	360	402	440	4	20,0	1,0	80,0	1,72	2,25	ABS, Bureau Veritas, CE, ERIFLEX FLEXIBAR, cURus, EAC, RoHS
FLEX3MRC3X24X1	541160	3 000	370	413	453	3	24,0	1,0	72,0	1,72	2,25	ABS, Bureau Veritas, CE, ERIFLEX FLEXIBAR, cURus, EAC, RoHS
FLEX3MRC4X24X1	541170	3 000	416	465	510	4	24,0	1,0	96,0	1,72	2,25	ABS, Bureau Veritas, CE, ERIFLEX FLEXIBAR, cURus, EAC, RoHS
FLEX3MRC3X32X1	541230	3 000	430	480	525	3	32,0	1,0	96,0	1,72	2,25	ABS, Bureau Veritas, CE, ERIFLEX FLEXIBAR, cURus, EAC, RoHS
Typical Application Current Rating: 500 A – Certification Details: UL® 67, UL® 758												
FLEX2MRC5X24X1	552580	2 000	460	514	563	5	24,0	1,0	120,0	1,72	2,25	ABS, Bureau Veritas, CE, ERIFLEX FLEXIBAR, cURus, EAC, RoHS
FLEX2MRC3X40X1	552700	2 000	466	522	570	3	40,0	1,0	120,0	1,72	2,25	ABS, Bureau Veritas, CE, ERIFLEX ABS, cURus, EAC, RoHS
FLEX2MRC4X32X1	552640	2 000	490	548	600	4	32,0	1,0	128,0	1,72	2,25	ABS, Bureau Veritas, CE, ERIFLEX ABS, cURus, EAC, RoHS
FLEX2MRC6X24X1	552590	2 000	506	566	620	6	24,0	1,0	144,0	1,72	2,25	ABS, Bureau Veritas, CE, ERIFLEX FLEXIBAR, cURus, EAC, RoHS
FLEX2MRC3X50X1	552760	2 000	530	592	650	3	50,0	1,0	150,0	1,72	2,25	ABS, Bureau Veritas, CE, ERIFLEX ABS, cURus, EAC, RoHS
FLEX2MRC4X40X1	552710	2 000	550	615	673	4	40,0	1,0	160,0	1,72	2,25	ABS, Bureau Veritas, CE, ERIFLEX ABS, cURus, EAC, RoHS
FLEX3MRC5X24X1	541180	3 000	460	514	563	5	24,0	1,0	120,0	1,72	2,25	ABS, Bureau Veritas, CE, ERIFLEX FLEXIBAR, cURus, EAC, RoHS

Part Number	Article Number	L (mm)	ΔT 40 K (A)	ΔT 50 K (A)	ΔT 60 K (A)	N	A (mm)	B (mm)	Cross Section (mm²)	2 Bar Current Coefficient	3 Bar Current Coefficient	Certifications
FLEX3MRC4X32X1	541240	3 000	490	548	600	4	32,0	1,0	128,0	1,72	2,25	ABS, Bureau Veritas, CE, ERIFLEX FLEXIBAR, cURus, EAC, RoHS
Typical Application Current Rating: 630 A – Certification Details: UL® 67, UL® 758												
FLEX2MRC5X32X1	552650	2 000	573	640	702	5	32,0	1,0	160,0	1,72	2,25	ABS, Bureau Veritas, CE, ERIFLEX FLEXIBAR, cURus, EAC, RoHS
FLEX2MRC10X20X1	552540	2 000	576	645	706	10	20,0	1,0	200,0	1,72	2,25	ABS, Bureau Veritas, CE, ERIFLEX ABS, cURus, EAC, RoHS
FLEX2MRC8X24X1	552600	2 000	606	678	743	8	24,0	1,0	192,0	1,72	2,25	ABS, Bureau Veritas, CE, ERIFLEX FLEXIBAR, cURus, EAC, RoHS
FLEX2MRC6X32X1	552660	2 000	640	715	783	6	32,0	1,0	192,0	1,72	2,25	ABS, Bureau Veritas, CE, ERIFLEX FLEXIBAR, cURus, EAC, RoHS
FLEX2MRC4X50X1	552770	2 000	650	727	795	4	50,0	1,0	200,0	1,72	2,25	ABS, Bureau Veritas, CE, ERIFLEX ABS, cURus, EAC, RoHS
FLEX2MRC5X40X1	552720	2 000	680	760	832	5	40,0	1,0	200,0	1,72	2,25	ABS, Bureau Veritas, CE, ERIFLEX FLEXIBAR, cURus, EAC, RoHS
FLEX3MRC5X32X1	541250	3 000	573	640	702	5	32,0	1,0	160,0	1,72	2,25	ABS, Bureau Veritas, CE, ERIFLEX FLEXIBAR, cURus, EAC, RoHS
FLEX3MRC6X32X1	541260	3 000	640	715	783	6	32,0	1,0	192,0	1,72	2,25	ABS, Bureau Veritas, CE, ERIFLEX FLEXIBAR, cURus, EAC, RoHS
FLEX3MRC5X40X1	541320	3 000	680	760	832	5	40,0	1,0	200,0	1,72	2,25	ABS, Bureau Veritas, CE, ERIFLEX FLEXIBAR, cURus, EAC, RoHS
Typical Application Current Rating: 800 A – Certification Details: UL® 67, UL® 758												
FLEX2MRC10X24X1	552610	2 000	716	800	877	10	24,0	1,0	240,0	1,72	2,25	ABS, Bureau Veritas, CE, ERIFLEX ABS, cURus, EAC, RoHS
FLEX2MRC4X63X1	552830	2 000	763	855	935	4	63,0	1,0	252,0	1,65	2,12	ABS, Bureau Veritas,

Part Number	Article Number	L (mm)	ΔT 40 K (A)	ΔT 50 K (A)	ΔT 60 K (A)	N	A (mm)	B (mm)	Cross Section (mm ²)	2 Bar Current Coefficient	3 Bar Current Coefficient	Certifications
												CE, ERIFLEX ABS, cURus, EAC, RoHS
FLEX2MRC6X40X1	552730	2 000	770	860	943	6	40,0	1,0	240,0	1,72	2,25	ABS, Bureau Veritas, CE, ERIFLEX FLEXIBAR, cURus, EAC, RoHS
FLEX2MRC8X32X1	552670	2 000	770	860	943	8	32,0	1,0	256,0	1,72	2,25	ABS, Bureau Veritas, CE, ERIFLEX FLEXIBAR, cURus, EAC, RoHS
FLEX2MRC5X50X1	552780	2 000	830	930	1 016	5	50,0	1,0	250,0	1,72	2,25	ABS, Bureau Veritas, CE, ERIFLEX FLEXIBAR, cURus, EAC, RoHS
FLEX3MRC8X32X1	541270	3 000	770	860	943	8	32,0	1,0	256,0	1,72	2,25	ABS, Bureau Veritas, CE, ERIFLEX FLEXIBAR, cURus, EAC, RoHS
FLEX3MRC5X50X1	541380	3 000	830	930	1 016	5	50,0	1,0	250,0	1,72	2,25	ABS, Bureau Veritas, CE, ERIFLEX FLEXIBAR, cURus, EAC, RoHS
Typical Application Current Rating: 1 000 A – Certification Details: UL® 67, UL® 758												
FLEX2MRC4X80X1	552890	2 000	906	1 015	1 110	4	80,0	1,0	320,0	1,65	2,12	ABS, Bureau Veritas, CE, ERIFLEX ABS, cURus, EAC, RoHS
FLEX2MRC5X63X1	552840	2 000	920	1 030	1 125	5	63,0	1,0	315,0	1,65	2,12	ABS, Bureau Veritas, CE, ERIFLEX FLEXIBAR, cURus, EAC, RoHS
FLEX2MRC6X50X1	552790	2 000	925	1 035	1 135	6	50,0	1,0	300,0	1,72	2,25	ABS, Bureau Veritas, CE, ERIFLEX FLEXIBAR, cURus, EAC, RoHS
FLEX2MRC8X40X1	552740	2 000	930	1 040	1 140	8	40,0	1,0	320,0	1,72	2,25	ABS, Bureau Veritas, CE, ERIFLEX FLEXIBAR, cURus, EAC, RoHS
FLEX2MRC10X32X1	552680	2 000	930	1 040	1 140	10	32,0	1,0	320,0	1,72	2,25	ABS, Bureau Veritas, CE, ERIFLEX ABS, cURus, EAC, RoHS
FLEX2MRC5X80X1	552900	2 000	1 050	1 175	1 285	5	80,0	1,0	400,0	1,65	2,12	ABS, Bureau Veritas, CE, ERIFLEX FLEXIBAR, cURus, EAC, RoHS

Part Number	Article Number	L (mm)	ΔT 40 K (A)	ΔT 50 K (A)	ΔT 60 K (A)	N	A (mm)	B (mm)	Cross Section (mm ²)	2 Bar Current Coefficient	3 Bar Current Coefficient	Certifications
FLEX2MRC8X50X1	552800	2 000	1 050	1 175	1 290	8	50,0	1,0	400,0	1,72	2,25	ABS, Bureau Veritas, CE, ERIFLEX FLEXIBAR, cURus, EAC, RoHS
FLEX2MRC10X40X1	552750	2 000	1 055	1 181	1 295	10	40,0	1,0	400,0	1,72	2,25	ABS, Bureau Veritas, CE, ERIFLEX ABS, cURus, EAC, RoHS
FLEX2MRC6X63X1	552850	2 000	1 085	1 215	1 330	6	63,0	1,0	378,0	1,65	2,12	ABS, Bureau Veritas, CE, ERIFLEX FLEXIBAR, cURus, EAC, RoHS
Typical Application Current Rating: 1 250 A – Certification Details: UL® 67, UL® 758												
FLEX2MRC6X80X1	552910	2 000	1 230	1 375	1 505	6	80,0	1,0	480,0	1,65	2,12	ABS, Bureau Veritas, CE, ERIFLEX FLEXIBAR, cURus, EAC, RoHS
FLEX2MRC5X100X1	552950	2 000	1 235	1 385	1 515	5	100,0	1,0	500,0	1,60	2,02	ABS, Bureau Veritas, CE, ERIFLEX ABS, cURus, EAC, RoHS
FLEX2MRC8X63X1	552860	2 000	1 245	1 395	1 525	8	63,0	1,0	504,0	1,65	2,12	ABS, Bureau Veritas, CE, ERIFLEX FLEXIBAR, cURus, EAC, RoHS
FLEX2MRC10X50X1	552810	2 000	1 245	1 395	1 525	10	50,0	1,0	500,0	1,72	2,25	ABS, Bureau Veritas, CE, ERIFLEX ABS, cURus, EAC, RoHS
FLEX2MRC6X100X1	552960	2 000	1 393	1 550	1 705	6	100,0	1,0	600,0	1,60	2,02	ABS, Bureau Veritas, CE, ERIFLEX FLEXIBAR, cURus, EAC, RoHS
Typical Application Current Rating: 1 600 A – Certification Details: UL® 67												
FLEX2MRC10X120	538650	2 000	2 070	2 330	2 550	10	120,0	1,0	1 200,0	1,49	1,95	ABS, Bureau Veritas, CE, ERIFLEX ABS, cURus, EAC, RoHS
Typical Application Current Rating: 1 600 A – Certification Details: UL® 67, UL® 758												
FLEX2MRC8X80X1	552920	2 000	1 430	1 600	1 755	8	80,0	1,0	640,0	1,65	2,12	ABS, Bureau Veritas, CE, ERIFLEX FLEXIBAR, cURus, EAC, RoHS
FLEX2MRC10X63X1	552870	2 000	1 435	1 600	1 755	10	63,0	1,0	630,0	1,65	2,12	ABS, Bureau Veritas, CE, ERIFLEX ABS, cURus,

Part Number	Article Number	L (mm)	ΔT 40 K (A)	ΔT 50 K (A)	ΔT 60 K (A)	N	A (mm)	B (mm)	Cross Section (mm ²)	2 Bar Current Coefficient	3 Bar Current Coefficient	Certifications
												EAC, RoHS
FLEX2MRC10X80X1	552930	2 000	1 585	1 775	1 945	10	80,0	1,0	800,0	1,65	2,12	ABS, Bureau Veritas, CE, ERIFLEX ABS, cURus, EAC, RoHS
FLEX2MRC8X100X1	552970	2 000	1 625	1 815	1 990	8	100,0	1,0	800,0	1,60	2,02	ABS, Bureau Veritas, CE, ERIFLEX FLEXIBAR, cURus, EAC, RoHS
FLEX2MRC10X100	552980	2 000	1 775	1 985	2 170	10	100,0	1,0	1 000,0	1,60	2,02	ABS, Bureau Veritas, CE, ERIFLEX ABS, cURus, EAC, RoHS

ADMISSIBLE CURRENTS: This table indicates the temperature rise produced by chosen current in the given section. This calculation does not take into account the heat dissipation from the switch gear.

ΔT = Temperature of conductors – Internal temperature of panel.

Refer to technical documentation for additional ampacity ratings.

ABS is a registered certification mark of American Bureau of Shipping. IEC is a registered trademark of the International Electrotechnical Commission. UL, UR, cUL, cUR, cULus and cURus are registered certification marks of UL LLC.

WARNING

nVent products shall be installed and used only as indicated in nVent's product instruction sheets and training materials. Instruction sheets are available at www.erico.com and from your nVent customer service representative. Improper installation, misuse, misapplication or other failure to completely follow nVent's instructions and warnings may cause product malfunction, property damage, serious bodily injury and death and/or void your warranty.

© 2020 nVent All rights reserved

nVent, nVent CADDY, nVent ERICO, nVent ERIFLEX and nVent LENTON are owned by nVent or its global affiliates.

All other trademarks are the property of their respective owners. nVent reserves the right to change specifications without prior notice.